

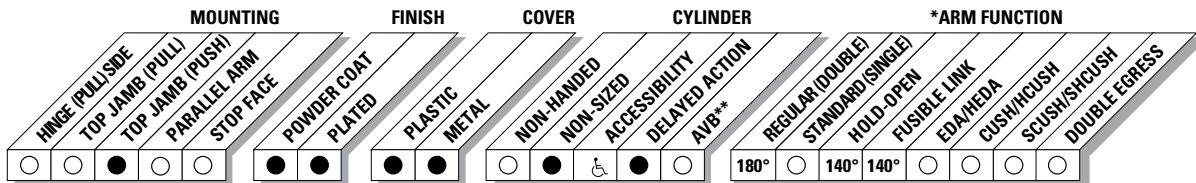
The 4020 is LCN's best performing heavy duty closer designed specifically for institutional and other rugged high traffic applications.

| | |
|--------------------------|---|
| Certifications | Grade 1 - ANSI A156.4, UL 10C, ADA, 100 Hour Salt Spray, Meets BAA - Buy American Act |
| Body Construction | <ul style="list-style-type: none"> ■ Cast Iron Body ■ Full Complement Bearing ■ 1-1/2" Diameter Piston ■ 11/16" Diameter Double Heat Treated Pinion Journal |
| Fluid | All Weather Fluid |
| Handing | Handed |
| Templating | Peel-n-Stick templates - 2-1-2" x 6" Mounting Hole Pattern |
| Size | Adjustable 1-5 or Sized 6 |
| Warranty | 30 years |

| | |
|---|---|
| Cover | <ul style="list-style-type: none"> ■ Plastic, Standard ■ Metal, Optional |
| Fasteners | Self Reaming and Tapping Screws (SRT) |
| Mounting | Top Jamb (Push Side) |
| Arms | Regular arm |
| Finishes/Colors/ Powder Coat | <ul style="list-style-type: none"> ■ Aluminum (689) ■ Statuary Bronze (690) ■ Light Bronze (691) ■ Black (693) ■ Dark Bronze (695) ■ Brass (696) ■ Custom colors optional <ul style="list-style-type: none"> ■ Optional SRI primer - powder coat only ■ Optional plated finishes |

Special Templates

Customized installation templates or products may be available to solve unusual applications. Contact LCN Product Support for assistance.



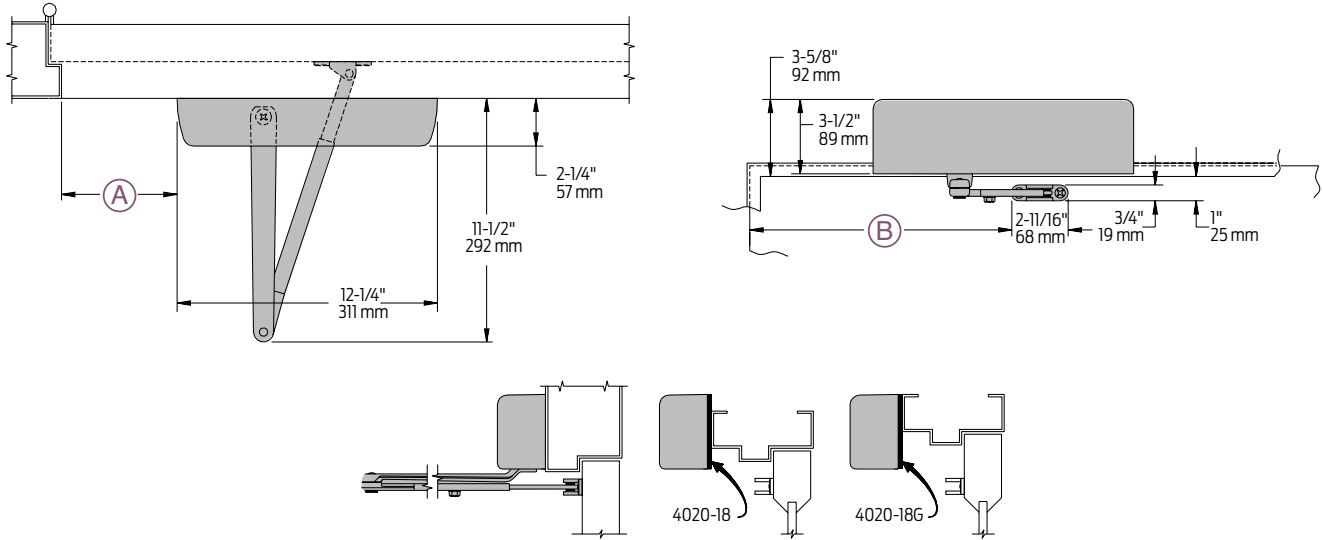
● AVAILABLE
○ NOT AVAILABLE

○ Closer available with less than 5.0 lbs. opening force on 36" door.
* Maximum opening/hold-open point with standard template.
** Advanced Variable Backcheck.

4020 Series

Mounting details

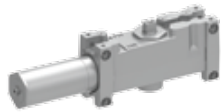
Top Jamb (Push) Side Mounting



| | | | | | | | | | | | | | |
|------------------------|---|-------|----------------------|-------|---------------------|-------|----------------|--|----------------------|--|----------------------|--|---------------------|
| Butt Hinges | Should not exceed 5" (127 mm) in width | | | | | | | | | | | | |
| Auxiliary Stop | Recommended at hold-open point or where the door cannot swing 180° | | | | | | | | | | | | |
| Reveal | <ul style="list-style-type: none"> 2-9/16" (65 mm) allows 180° opening with regular arm 4-13/16" (122 mm) allows up to 140° opening with regular arm 8" (203 mm) allows up to 140° opening with LONG ARM where standard rod and shoe is replaced with optional long rod and shoe (4020-79LR) | | | | | | | | | | | | |
| Head Frame | Less than 3-7/16" (87 mm) requires PLATE, 4020-18 Use PLATE, 4020-18G for flush ceiling condition. Either plate requires 1-3/4" (44 mm) frame minimum. | | | | | | | | | | | | |
| Top Rail | <ul style="list-style-type: none"> Requires minimum 1-1/2" (38 mm) Closer on 4020-18 plate requires 2" (51 mm) minimum Closer on 4020-18G plate requires 2-3/4" (70 mm) minimum | | | | | | | | | | | | |
| Delayed Action | <ul style="list-style-type: none"> Add suffix "DEL" to selected cylinder. Not available with 4026 cylinder Delays closing from maximum opening to approximately 75° Delay time adjustable up to approximately 1 minute | | | | | | | | | | | | |
| Maximum Opening | Can be templated for: | | | | | | | | | | | | |
| | <table border="0"> <tr> <td>100°:</td> <td>A = 6" (152 mm)</td> <td>140°:</td> <td>A = 4" (102 mm)</td> <td>180°:</td> <td>A = 2" (51 mm)</td> </tr> <tr> <td></td> <td>B = 12 3/8" (314 mm)</td> <td></td> <td>B = 10 3/8" (264 mm)</td> <td></td> <td>B = 8 3/8" (213 mm)</td> </tr> </table> | 100°: | A = 6" (152 mm) | 140°: | A = 4" (102 mm) | 180°: | A = 2" (51 mm) | | B = 12 3/8" (314 mm) | | B = 10 3/8" (264 mm) | | B = 8 3/8" (213 mm) |
| 100°: | A = 6" (152 mm) | 140°: | A = 4" (102 mm) | 180°: | A = 2" (51 mm) | | | | | | | | |
| | B = 12 3/8" (314 mm) | | B = 10 3/8" (264 mm) | | B = 8 3/8" (213 mm) | | | | | | | | |

Notes:
 • Hold-open points up to maximum opening or 140°, whichever is less, for hold-open or fusible link arm
 • For hold-open beyond 140°, use 4110 Series closer

Cylinders



4021(6)-3071
Cast Iron Cylinder Assembly

- Handed
- Standard

Covers



Left Hand Shown

4020-72
Plastic Cover

- Handed
- Standard



Right Hand Shown

4020-72MC
Metal Cover

- Handed
- Required for plated finishes and custom powder coat finishes
- Optional

Arms



4020-3077
Regular Arm

- Non-handed



4020-3077L
Long Arm

- Non-handed
- Includes 4020-79LR for deep reveals. (see page 14 for allowable reveals)
- Optional



4020-3049
Hold-Open

- Handed
- Provides hold-open function, adjustable at elbow
- 5-3/4" (146 mm) maximum reveal, 140° hold open
- Optional



4020-3049FL
Fusible Link

- Handed
- Releases hold-open function, adjustable at shoe, when exposed to temperatures above 165° F
- 3-7/8" (98 mm) maximum reveal
- Optional

NOTE: Check local codes before specifying FL arms. NOT A life safety product!

Installation Accessories



4020-18
Plate

- Required where head frame is less than 3-7/16" (87 mm)
- Requires minimum 1-3/4" (44 mm) minimum head frame and 2" (51 mm) top rail
- 3-7/8" (98 mm) maximum reveal



4020-18G
Plate

- For flush ceiling condition
- Requires minimum 1-3/4" (44 mm) minimum head frame and 2-3/4" (70 mm) top rail

4020 Series

Ordering Information

How-to-order 4020 Series closers

1. Select cylinder size

- 4021 (adjustable from size 1 to 5)
- 4026 (DEL not available)

2. Specify hand

- RH
- LH

3. Select finish

- Standard Powder Coat _____
Aluminum, Dark Bronze, Statuary,
Light Bronze, Black, Brass.

Closer will be shipped with:

- Standard cylinder
- Standard cover
- Regular arm
- Self-reaming and tapping screws unless options listed below are selected.

Closer options

Cylinder

- Delayed Action (DEL)

Cover

- Metal (MC)

Arm

- Hold-Open (H)
- Fusible Link, 165°F (FL)

Finish

- Custom Powder Coat (RAL) _____
(handed metal cover required)
- Plated Finish, US _____
(handed metal cover required)
- SRI primer (use with powder coat finishes only)

Screw Pack

- TB* & SRT Screw (TBSRT)
- Wood & Machine Screw (WMS)
- TB* & Wood & Machine Screw (TBWMS)
- TORX Machine Screw (TORX)
- TB* & TORX Machine Screw (TBTRX)
- * Specify door thickness if other than 1-3/4"

Installation Accessories

- Plate, 4020-18
- Plate, 4020-18G

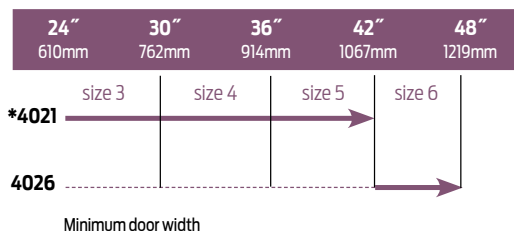
Special Template

- ST- _____

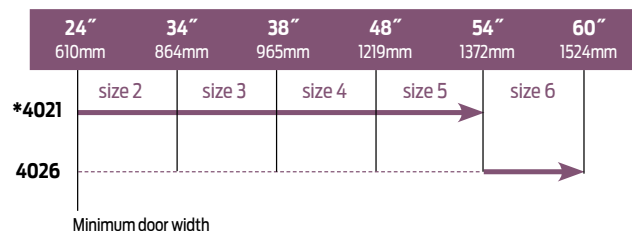
Table of sizes

- Select closer based on width of door
- The spring power of non-sized 4021 cylinder is adjustable from size 1 through size 5 and is shipped set to size 3
- Sized 4020 Series cylinders available in size 6
- Delayed action not available with 4026 cylinder

Exterior (and Vestibule) door width



Interior door width




→ Indicates recommended range of door width for closer size.
* Adjustable Size 1 thru 5.

Reduced opening force 4020 Series closers

CAUTION ! Any manual door closer, including those certified by BHMA to conform to ANSI Standard A156.4, that is selected, installed and adjusted based on ADA or other reduced opening force requirements may not provide sufficient power to reliably close and latch a door.

Refer to AUTOMATIC OPERATORS section for information on systems that meet reduced opening force requirements without effecting closing power.

|  | DOOR WIDTH | 36" | 42" | 48" |
|---|------------|------|------|------|
| | 8.5* lbs. | 4021 | 4021 | 4021 |
| 5.0* lbs. | 4021 | 4021 | 4021 | |

* Maximum opening force.